


4" / 6.5" / 8" Coaxial Ceiling Loudspeaker

AS104 / AS106 / AS108

The AS104 / AS106 / AS108 comes in a pair of 4" / 6.5" / 8" coaxial 2-way ceiling loudspeakers that deliver decent sonic performance. Each speaker ships with a 4" / 6.5" / 8" woofer, 20 mm dome tweeter, and 30W RMS, 60W peak (8Ω) / 60W RMS, 120W peak (8Ω) / 80W RMS, 160W peak (8Ω) power handling capability. Excellent and consistent sound quality is ensured by taking advantages of its 100 - 20 kHz / 80 - 20 kHz / 65 - 20 kHz bandwidth and wide coverage, allowing less speakers used to cover the listening area to lower the cost of the system installed.

The loudspeaker contains a matching transformer, running comfortably on 70 / 100 V lines or at 8 Ω to suit various application demands. Phase issues are minimized as a result of the adoption of the coaxial neodymium magnetic driver, making sound waves with various frequency bands easier to be added together instead of canceling each other out. Made of UL94-V0-compliant flame retardant materials, the housing, together with the Zinc-plated steel backcan, improve safety for applications where flame and fire protection is of the highest importance. When it comes to installation, each speaker features a cutout template for quick and easy post construction installation and can be secured with its dog-leg mounting system. The paintable magnetic grille assures effortless installation and cleaning while giving unobtrusive appearance in any room design.

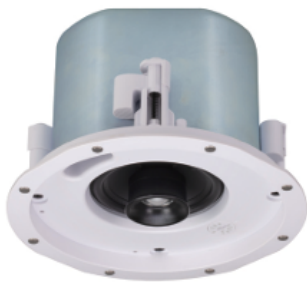
AS104 / AS106 / AS108 is ideal for residence and enterprise-grade audio applications, such as auditoriums, houses of worship, sports venues, and any small or mid-sized public address systems that require a clear and intelligible sound solution without compromise on life safety.

Total System Power 30W RMS / 60W Peak (8 Ω)	Total System Power 60W RMS / 120W Peak (8 Ω)	Total System Power 80W RMS / 160W Peak (8Ω)	Sensitivity 86 dBSPL	Sensitivity 90 dBSPL	 Coaxial Driver Design	Hi-Z 70V / 100V Low-Z 8 Ω
(AS104)	(AS106)	(AS108)	(AS104)	(AS106/AS108)		

Features

- Coaxial design with premium components:
 - 4" / 6.5" / 8" high output driver with rubber surround and heavy-duty voice coil
 - 20 mm dome tweeter
- 100 - 20 kHz (AS104) / 80 - 20 kHz (AS106) / 65 - 20 kHz (AS108) bandwidth with wide coverage for consistent, full-range coverage of the space while reducing the amount of the speakers needed
- Switchable for use as either an 8 Ω low-impedance speaker or as part of a 70V / 100V distributed loudspeaker system
- UL94-V0 compliance for life safety applications
- Paintable magnetic grille for blending into any room decor
- Ease of installation guaranteed with the magnetic grille, dog leg mounting system and cutout template

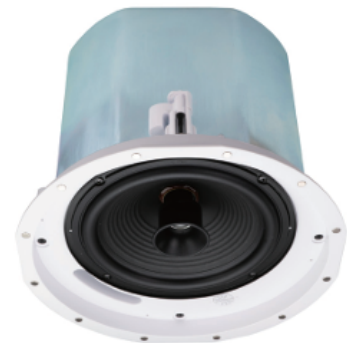
AS104



AS106



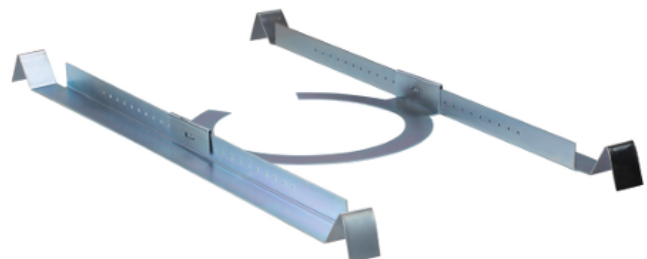
AS108



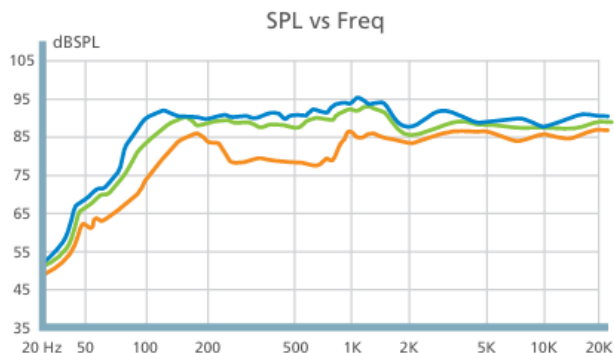
Speakers are sold in pairs



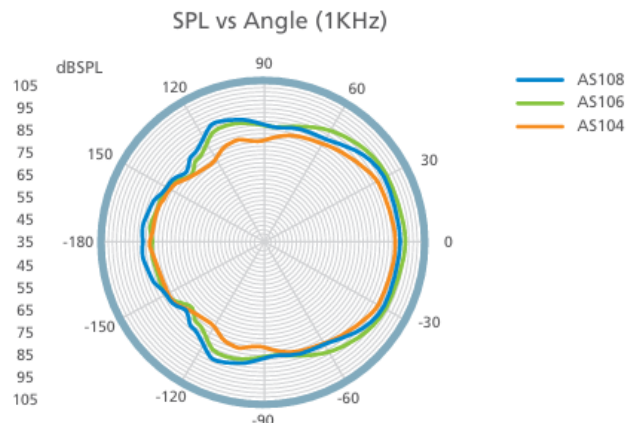
Ceiling reinforcement kits included for reliable installation



Frequency Response Chart



Polarity



Specifications

	AS104	AS106	A S108
System Specification			
LF Driver	4" Paper Cone with Rubber Suspension	6.5" Paper Cone with Rubber Suspension	8" Paper Cone with Rubber Suspension
HF Driver	20 mm PEI Dome Tweeter		
Frequency Response	100 ~ 20 kHz (-10 dB)	80 ~ 20 kHz (-10 dB)	65 ~ 20 kHz (-10 dB)
Distortion	<=5 %		
Rated Power	30 W RMS / 60W Peak	60 W RMS / 120W Peak	80 W RMS / 160W Peak
Sensitivity	86 dB SPL, @1 m, 1 W, 1 kHz	90 dB SPL, @1 m, 1 W, 1 kHz	90 dB SPL, @1 m, 1 W, 1 kHz
Transformer Taps	70 V(2.5 W, 5 W, 10 W, 20 W) 100 V(*, 5 W, 10 W, 20 W)	70 V(7.5 W, 15 W, 30 W, 60 W) 100 V(*, 15 W, 30 W, 60 W)	70V(10W, 20W, 40W, 80W) 100V(*, 20W, 40W, 80W)
Compliance			
Certification	CE, WEEE, RoHs		
Connectors			
Audio Inputs	5.08 mm Euroblock Connector		
Environmental			
Operating Temperature	0 – 40 °C		
Humidity	0 – 80 % RH, Non-Condensing		
Storage Temperature	-20 – 60 °C		
Physical Properties			
Weight	2.20 kg	3.70 kg	5.70 kg
Housing	UL94-V0 ABS Plastic Baffle Zinc-plated steel backcan		
Dimensions (L x W x H)	21.80 x 21.80 x 13.00 cm	25.72 x 25.72 x 19.75 cm	30.9 x 30.9 x 24.8 cm
Color	White Speaker Grille (Paintable) White Speaker Baffle		
Cut-out Diameter	182 mm	221 mm	271 mm
In-ceiling Clearance Height	125 mm	195 mm	243 mm
Carton Lot	2 Pcs / Carton		